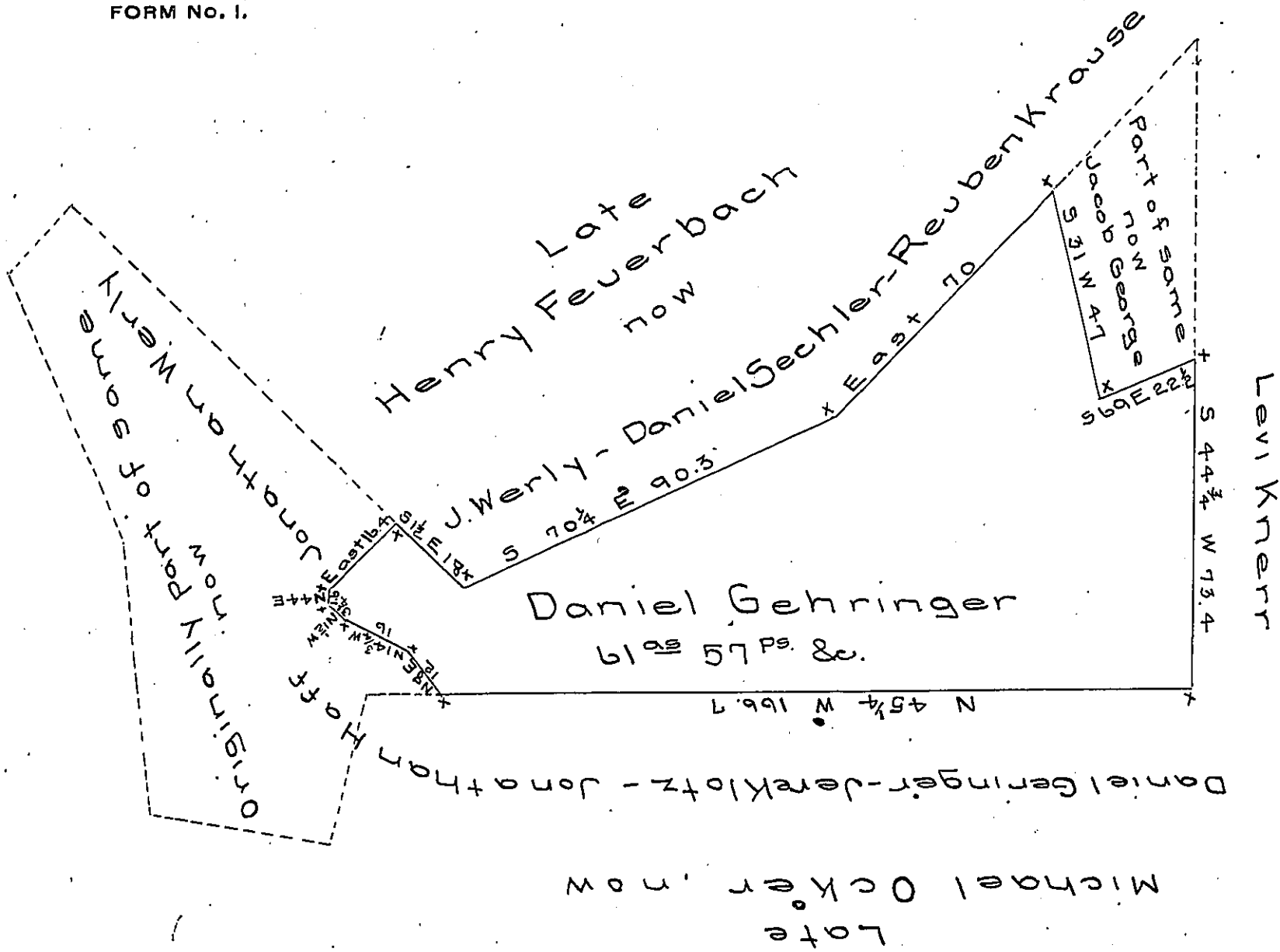


FORM No. 1.



Draft of a tract of land situate in Lowhill township, Lehigh County containing 61⁵⁷ P^s. and allowance surveyed for Daniel Gehring the 13th day of June A.D. 1872, being a part of a larger tract of 94¹⁴⁸ P^s &, originally surveyed in pursuance of a warrant granted to Magdalena Rabenold, dated April 11th 1749.

Geo. Blank C.S.

To R.B. Beath Eq. }
 Surveyor General }

IN TESTIMONY that the above is a copy of the original remaining on file in the Department of Internal Affairs of Pennsylvania, made conformably to an Act of Assembly approved the 16th day of February, 1833, I have hereunto set my Hand and caused the Seal of said Department to be affixed at Harrisburg, this eighteenth day of December 1906.

Joseph P. ...
 Secretary of Internal Affairs.